

# Instructions for use of Xiaote all-purpose instrument V2.5-20250327

## 1. Instrument interface identification instructions

### 1.1 Lighting status

The high beam, low beam, and automatic headlight status will be displayed in real time above the display screen; the turn signal status is located on the left and right sides of the display screen.

**Note** ⚠️: This logo supports Mini Program to manually turn off hidden [Click here to learn more](#) ➡️



High beam lamp



Low beam light



Automatic  
headlights



Turn signal light

### 1.2 Blind spot reminder

A yellow icon reminder will be displayed in the lower left and lower right corners of the screen when a vehicle approaches from the side or rear.

**Note** ⚠️: This logo supports Mini Program to manually turn off hidden [Click here to learn more](#) ➡️



盲区检测

**Note** ⚠: This function is limited by Tesla's assisted driving computer and requires a fully automatic driving capability (HW3.0 or above) computer to be used normally.

Vehicles equipped with HW0/2.5 may have the problem of blind spot reminder being on for a long time. It is recommended to enter the Mini Program - turn off the blind spot reminder icon display in the dial settings.

**Note** ⚠: This feature is limited by Tesla's driver assistance computer, and the blind spot signal will automatically turn off when the vehicle speed is below 7km/h (about 4mph).

### 1.3 gear display

The current P, R, N, and D gears will be displayed in real time at the top of the display screen. After the P gear is set, the top of the screen will automatically switch to time display.



P file



R gear



N gear



D file

### 1.4 Energy bar

The left side displays kinetic energy recovery power, and the right side displays battery output power.



Kinetic energy recovery strip



Energy consumption bar

## 1.5 Speed Alert

Automatically synchronize the road speed limit obtained by the car machine, and an **orange logo** reminder will appear in the speed display area when speeding.



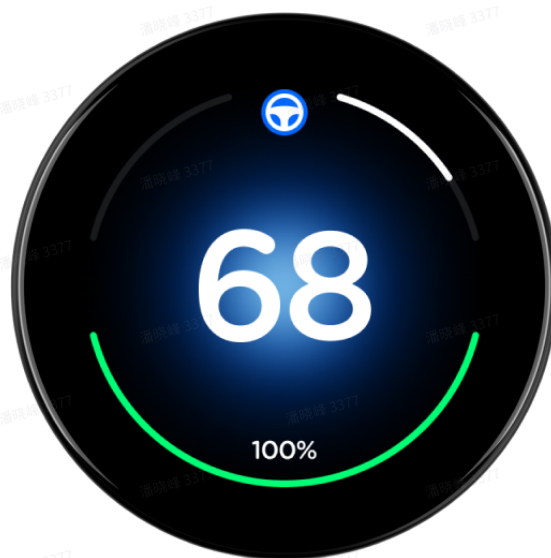
超速提醒

**Note** ⚠: This alert only appears when the vehicle speed reaches 60km/h (about 37mph) or above.

**Note** ⚠: This logo supports Mini Program to manually turn off hide [Click here to learn more](#)

## 1.7 Navigation light reminder

After turning on the navigation mode (AP auto-recovery function), the **blue navigation light** will be displayed in the speed area:



If the navigation light (blue background) is turned on, it indicates that the navigation mode is currently enabled. After changing lanes, the AP recovery command will be automatically executed.

If the navigation light (blue background) is turned off, it means that the navigation mode is not currently enabled, and the AP recovery command will not be automatically executed after changing lanes.

👉 [Click to view the conditions for enabling Navigation Mode](#) 👉

**Note** ⚠️: After the navigation light is turned on, the instrument interface will no longer display a speeding reminder. Please adjust the driving speed by yourself.

## 1.6 Automatic parking

After AutoHold automatic parking is turned on, the corresponding icon will be displayed at the bottom of the speed for prompt



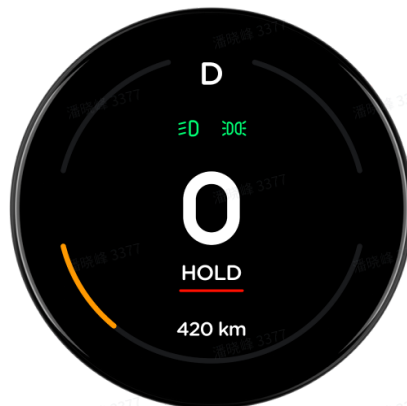
AutoHold

## 1.7 Power display

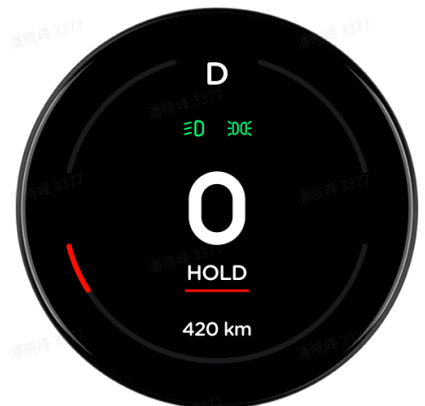
The bottom displays the current battery range and battery bar; if the battery bar is less than 20%, it will be displayed in yellow; if it is less than 10%, it will be displayed in red. (The new UI has been updated to display symmetrically centered)



100%



20%



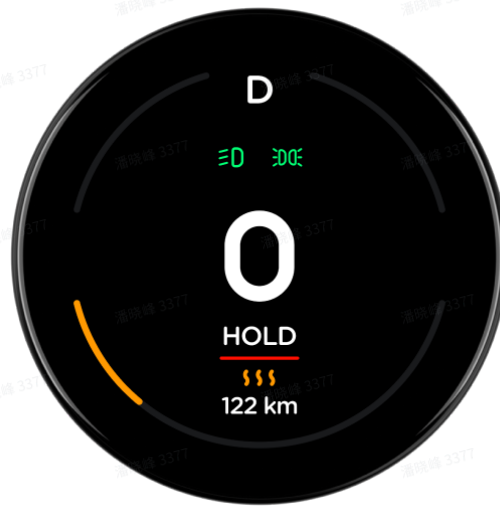
10%

**Note ⚠:** This logo supports Mini Program supports switching between 100km display and percentage display 🖱️ [Click here to learn more](#) 🖱️

**Note ⚠:** After updating the 2024.20.9 version, the issue of inaccurate display of the dial's range can be solved by using the Mini Program to upgrade to the latest firmware and long pressing the right wheel of the steering wheel for 6 seconds to switch to the new version of the range algorithm.

## 1.8 Battery heating state

After turning on the battery heating/navigating to the Tesla supercharging site, the battery heating status will be displayed in real time



电池加热

## 1.9 Door Status

When opening the car door, the current four-door opening status will be displayed in the middle of the screen in real time



## 1.10 AP Assist Status

After turning it on, the AP status icon will be displayed at the top, and the real-time synchronization reminder of holding the steering wheel will be synchronized



## 1.11 Charging status

When the charging gun is inserted for charging, the charging progress and battery level will be displayed in real time



## 1.12 Standby animation

Can be customized and modified using "Xiao Te" Mini Program

- Mars Time "Experience Musk's Immigration Plan in Advance"
- The earth rotates "low-carbon travel protects our blue planet"

Temi blinked and said, "Cute and silly, I'll accompany you to park and rest."

Xiaote Dynamic Clock "Minimalist Clock, Small Special Dial"

**Standby screen switching method** 🖱️ [Click here to learn more](#) 🖱️

**Note** ⚠️: This screen needs to be in P gear, **no operation within 10 seconds** will enter the specified standby screen.





## 2. (Task Master) Control Menu Operation Instructions

### 2.1 Entry method:

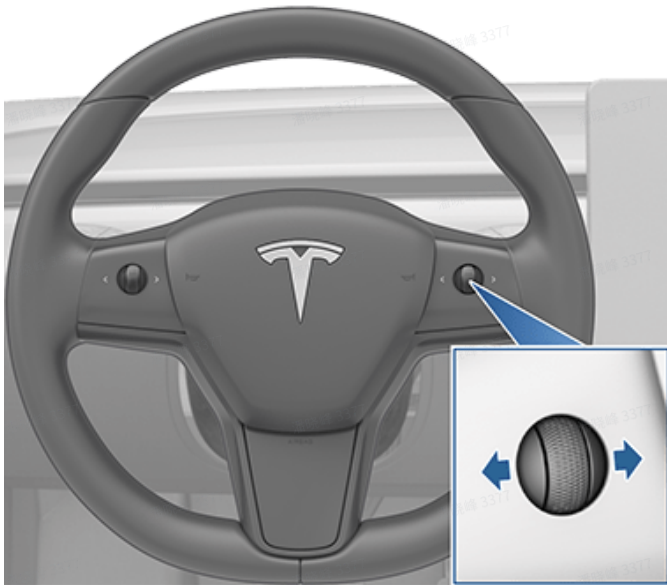
In any state, **turn left 1 second right scroll wheel** to enter the vehicle control menu





## 2.2 Function Switch:

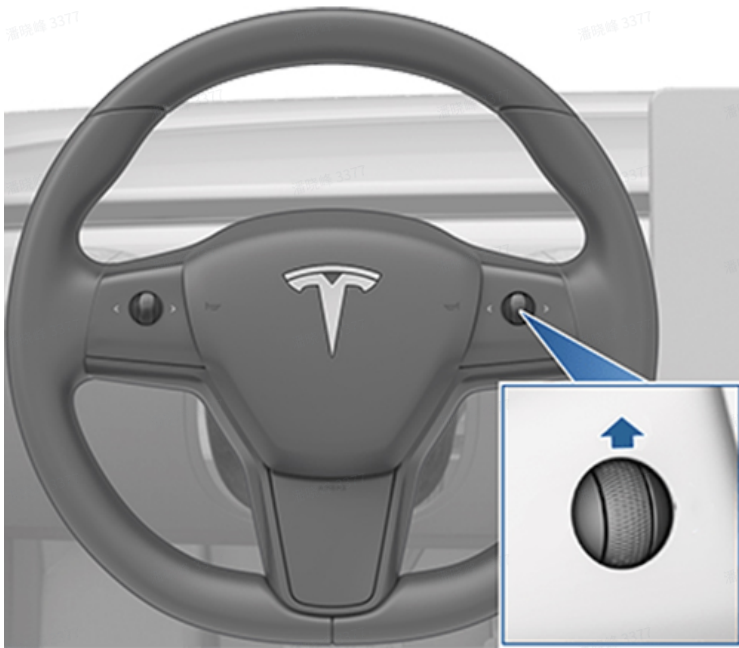
Turn the right scroll wheel to the left and right to switch and select related function items



**Note** ⚠: After entering the menu, the left and right toggle selection function will **adjust the AP distance synchronously** . Please exit the menu interface in time to **pay attention and adjust in time** .

## 2.3 Opening method:

Select the corresponding function icon and swipe up ↑ The right scroll wheel can open and execute the corresponding function



**Note** ⚠: When turning on AP assisted driving, do not slide the multi-grid roller up and down at one time. It is recommended to slide the roller one grid each time to avoid affecting the speed of assisted driving.

## 2.4 Exit method:

Scroll down the right scroll wheel to exit the main instrument interface. If there is no operation for 10 seconds, it will automatically exit the instrument interface.

**Warning** ⚠: In the process of turning on AP assisted driving, the up-slide wheel will open the "Task Master" function and the down-slide wheel exit will adjust the AP assisted driving setting speed at the same time. It is recommended to slide up or down one grid each time the switch is turned on, **please pay attention and adjust in time.**

## 3. (Task Master) Vehicle Control Menu Function Description

### 3.1 Pulse high beam lamp:

Can achieve continuous fast switch 10 times high beam (**Xiaote Box needs to be upgraded to version 2.3 or above**)

**Note** ⚠: This function can be enabled in the Mini Program Quick Open [Click to learn more](#)

**Warning** ⚠: Please drive civilized, comply with local traffic regulations, **do not use this function unless necessary**, the relevant risks need to be borne by the driver.

### 3.2 Pulse horn:

Can achieve continuous rapid whistle 10 times (Xiaote Box needs to be upgraded to version 2.3 or above)

**Note** ⚠: This function can be enabled in the Mini Program Quick Open [Click to learn more](#) ➡

**Warning** ⚠: Please drive civilized, comply with local traffic regulations, **do not use this function unless necessary**, the relevant risks need to be borne by the driver.

### 3.3 Navigation Mode:

AP automatic recovery function can be realized after changing lanes under AP status " **This function is prohibited to be turned on in non-closed sections** "

After this function is turned on normally, if you need to turn it off, you can re-enter the "Mission Master" interface, select the navigation mode icon, and slide up the right scroll wheel. The icon will show OFF status, which means it has been turned off. The vehicle will also automatically turn off this function when it is hooked into the P gear main control box.

**Note** ⚠: This feature can be customized by Task Master to sort and adjust the Pilot Mode icon to the front for quick opening when convenient to use.

**Note** ⚠: This function can be turned on and off quickly in the Mini Program [Click to learn more](#) ➡

1. Gear lever models (Model 3/Y): Raise the right gear lever to quickly close, and the blue pilot light on the instrument panel will turn off.



2. Gearless models (updated Model 3): Pressing the scroll wheel can quickly turn off, and the blue navigation light of the instrument panel will turn off



**Warning** ⚠: This function can only be used on closed highways and is prohibited from being used on ground roads. **Please turn off this function in advance when changing lanes continuously to overtake, entering and exiting ramps, and making U-turns**, otherwise there will be a situation where " **grabbing the steering wheel** " affects normal driving.

**AP Recovery Function Description:** This function is based on Tesla's "Auto Turn Off Turn Signal" function. Therefore, before use, you need to turn on the "Auto Turn Signal" function in the settings. After this function is turned on, it determines whether the lane change is completed by detecting whether the "Auto Turn Signal" is turned off. After the Auto Turn Signal is turned off, it will automatically send an AP start command, but whether it is turned on successfully depends on the current road line and other conditions.

**Note** ⚠: After turning on the navigation mode, the speed area of the instrument main interface will display a **blue navigation light** reminder.

The navigation light will determine whether the conditions for lane change recovery can be met based on the following conditions.

1. The vehicle turns on AP assisted driving
2. Complete the lane change operation within 10 seconds

The vehicle is traveling at a speed between 30km/h and 140km/h (19mph-87mph)

**If any of the above conditions are not met, the pilot light will turn off and the automatic AP recovery operation will not be performed after changing lanes.**

### 3.4 Quickly open the door:

This function can release the door lock cylinder by simulating the in-car door opening button command to pop open the passenger and rear doors.

**Note** ⚠: **This function can open the shortcut in Mini Program** [Click to learn more](#) ➡

**WARNING** ⚠: This function is only **available when the speed is 0 and the P gear is parked** .

**Warning** ⚠ : Some models due to **hinge and door structure problems may not be able to fully pop out** , which is normal. You can try to apply special lubricating grease at the door lock block and hinge to solve it.

### 3.5 Vehicle battery preheating:

After this function is turned on normally, if you need to turn it off, you can enter the "Task Master" interface again, select and swipe up the right scroll wheel, and the icon will show OFF status, which means it has been turned off. The vehicle will also automatically turn off this function when it is hooked into the P gear main control box. When the car computer ends the supercharging station navigation, this function will also be automatically turned off.

**Note** ⚠: Whether to heat the battery after turning on the heating, and the heating speed are evaluated and calculated by the original vehicle BMS based on the current ambient temperature and battery.

**Note** ⚠: **Partial shutdown of battery heating does not immediately force shutdown of the heating process** , as the opening and interruption of the heating process are handled by the vehicle BMS battery management system.

### 3.6 Open the glove box:

It can quickly open the glove box in the passenger seat, and even if a privacy password is set, it can be opened directly without verification.

### 3.7 Seat Quick Control:

Integrated with one-click folding, one-click recovery, one-click folding and massage functions for the passenger seat.

One-click folding instructions for the co-pilot: You can lower the backrest of the co-pilot and move the seat cushion to the back for easy rest.

One-click folding instructions for the co-pilot: The co-pilot backrest can be folded, and the seat cushion can be moved to the front for a more comfortable rear seat.

One-click recovery instructions for the passenger seat: The backrest and seat cushion of the passenger seat can be quickly restored to a sitting position close to normal.

**Warning** ⚠: During the seat adjustment process, **be sure to ensure that there are no passengers and objects blocking** the front and rear, otherwise the seat may be damaged or squeezed, and even passengers may be injured.

Seat massage instructions: The massage effect can be achieved by using the two waist airbags of the driver's seat to inflate and deflate.

After this function is turned on normally, if you need to turn it off, you can enter the "Task Master" interface again, select and slide up the right scroll wheel, and the icon will show OFF status, which means it has been turned off. The vehicle will also automatically turn off this function when it is hooked into the P gear main control box.

**Note** ⚠: Using this function may **affect the service life of the waist airbag**, please use it with caution.

### 3.8 0-100 acceleration test:

This function can record the time taken by the vehicle from 0-100km/h (0-60mph), and the results will be displayed on the dashboard screen after the test is completed.

**Warning** ⚠: **This function is only available on closed and safe roads, do not use this function on public roads.**

### 3.9 rear fog light flashes:

After turning on, the fog light will flash continuously for 10 times, with a flashing frequency of 60 milliseconds each time.

**Note** ⚠: **The rear fog light flash function requires the front headlights to be turned on.**

**Note** ⚠: **This function can be enabled in the Mini Program Quick Open** [Click to learn more](#)

**Warning** ⚠: Please drive civilized, comply with local traffic regulations, **do not use this function unless necessary**, the relevant risks need to be borne by the driver.

## 4. APP function description

### 4.1 Bluetooth connection:



After entering the XiaoteBox all-round dial interface, find the Bluetooth device named XiaoteBox-xxxx and connect it.

**Note ⚠:** The first connection needs to follow the prompts to **press the top double flashing light button twice within 3 seconds for pairing verification** to complete the connection.

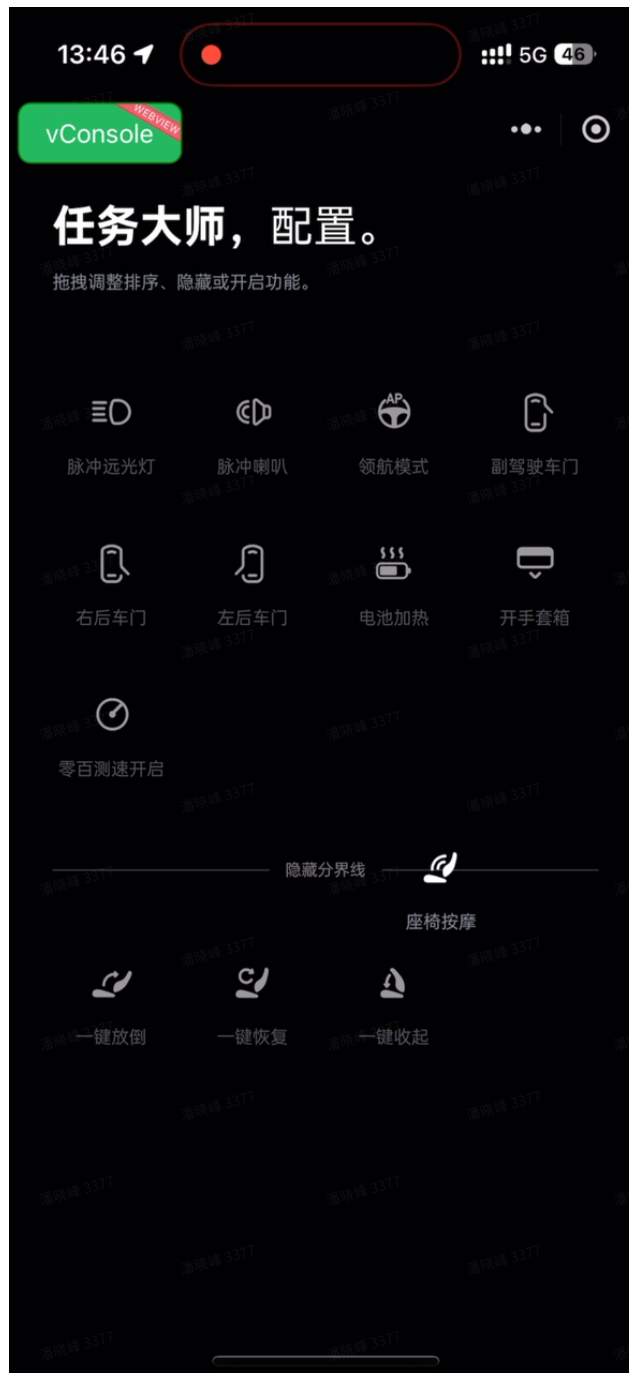


**Note ⚠:** If you can't connect, connect failed and can't find Bluetooth devices, please troubleshoot in the following order:

1. Check whether the Bluetooth function of the mobile phone is enabled, and enter the system settings to check whether the APP has enabled Bluetooth permissions
3. Try to exit the APP background program and reopen the APP.
4. Try to enter the Bluetooth function of the mobile phone settings, find the device at the beginning of XiaoteBox, click the right and click Ignore this device
4. Try to restart the CanBus main control box by simultaneously dialing the left and right rollers for 3 seconds
5. Try to turn off the sentry mode of the vehicle and lock it for 15-20 minutes until the vehicle sleeps and loses power

## 4.2 Mission Master:



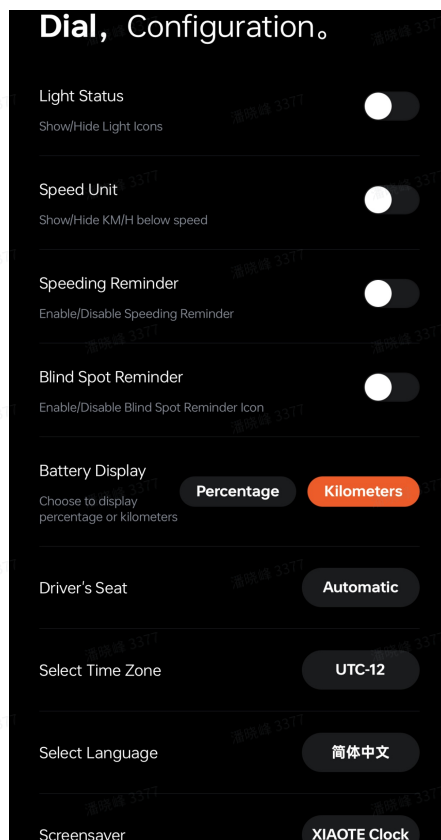


After clicking to enter the task master, you can drag the icon to the function bar above the dotted line to enable the function, and drag it to the bottom to close and hide.

And drag the icon in the upper icon bar to adjust the position to achieve custom task master sorting.

## 4.3 Dial Settings

### 1. Dial configuration:



① Customizable display and hide of the light status, speed unit, overspeed reminder and blind spot reminder of the instrument interface

**Note ⚠:** Turning off blind spot reminder can solve the bug that the instrument interface of HW2.5 model always displays blind spot reminder.

② Battery level display supports switching between percentage and mileage.

③ Driving position selection: right and left rudder can be switched, and the relevant functions will be automatically adapted. Xiaote box 2.3 and above versions are automatically judged.

④ Time zone selection: Time zone adjustment can be provided for users in different regions. The standard time zone in China is UTC/GMT + 8.

Language selection: Provide foreign language selection and switching between Chinese, Korean, Japanese, French, English, etc.

Standby screen: Customizable to switch standby animation

- Mars Time "Experience Musk's Immigration Plan in Advance"

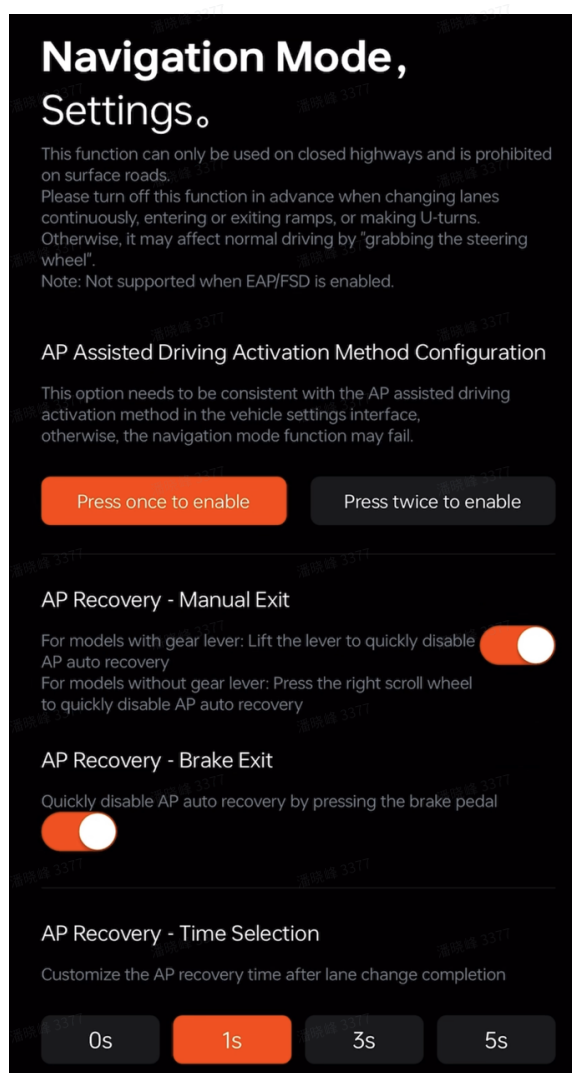
- The earth rotates "low-carbon travel protects our blue planet"

Temi blinked and said, "Cute and silly, I'll accompany you to park and rest."

XIAOTE Clock "Minimalist Clock, Small Special Dial"

👉 [Effect display, click here to view](#) 👈

## 2. Navigation mode settings:



### Configure AP assisted driving activation method:

It can be matched according to the AP opening mode of the car machine, and is fully compatible with pressing 1/2 times to open the AP opening mode

### ② Navigation mode is quickly turned off:

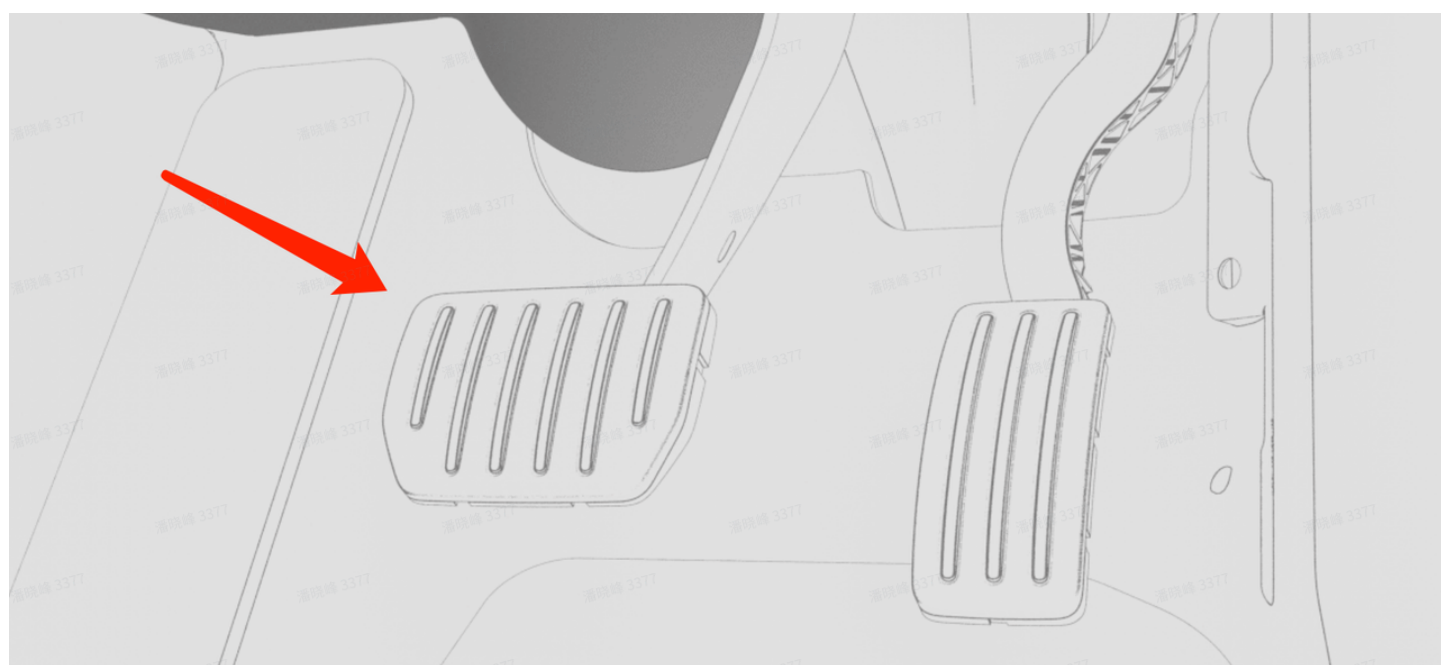
Manually exit:

After opening, the pilot mode can be quickly turned off by the gear lever (old Model 3/Y models) or the right scroll wheel (new Model 3/Y models)



### Brake Exit:

After turning it on, you can quickly turn off the pilot mode by pressing the brake pedal.



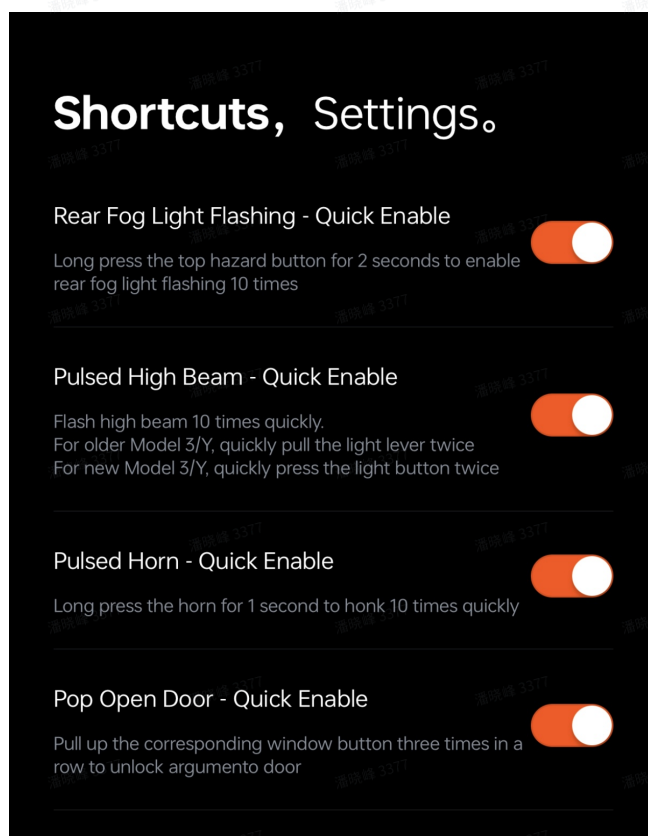
**Note** ⚠: Only when the vehicle is in the AP assisted driving state can the pilot mode be quickly turned off in this way. If the AP assisted driving is not turned on, press the button to still execute the original vehicle command.

### AP recovery time customization:

The time to turn on the AP after changing lanes can be customized according to personal driving habits, and the AP assisted driving will be restored according to the set time after selection

**Warning** ⚠: 0s means to immediately perform AP assisted driving recovery after recognizing the turn signal off. If you hesitate to change lanes or change lanes too slowly, it will lead to the situation of "grabbing the steering wheel".

### 3. Shortcut settings:



The rear fog light flashes and quickly turns on.

After enabling this function, long pressing the top double flash button for 2 seconds will automatically trigger the fog light to flash after 10 times.



**Note** ⚠: After this function is completed, you need to manually press the double flash button again to turn off the double flash light.

**Warning** ⚠: This function is only for safety reminders and warnings, please do not flash the rear vehicles for a long time to avoid affecting the driving safety of others.

## ② Pulse high beam quick start:

After enabling this function, you can quickly turn on the pulse high beam command by the following methods:

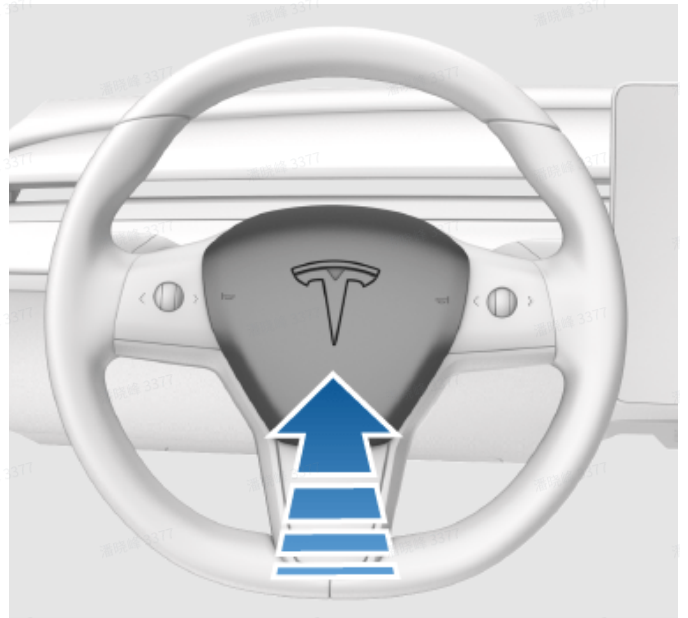
Model with gear lever: quickly pull the left light lever twice

No gear lever model: quickly press the high beam button twice



## ③ Pulse horn quick start:

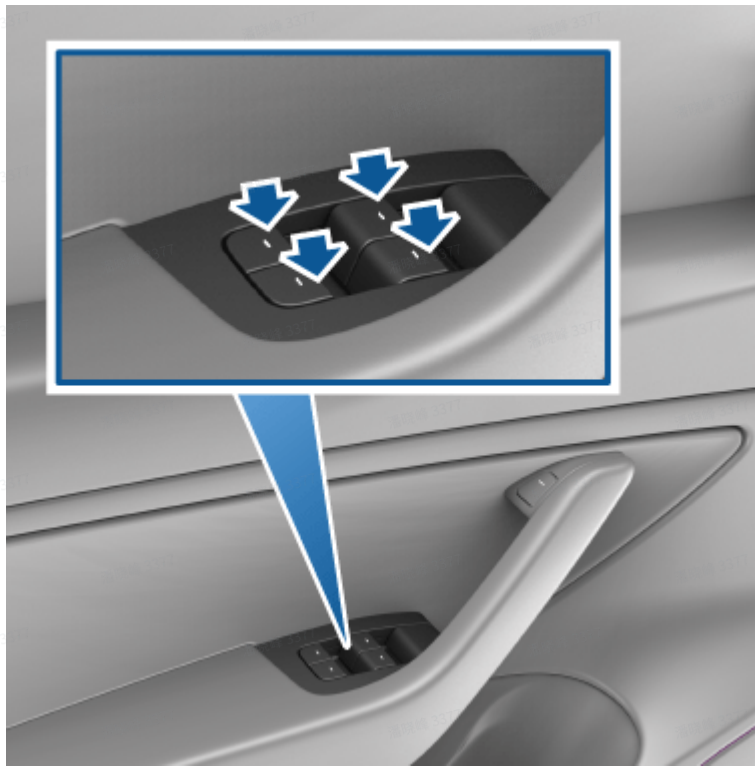
After enabling this function, you can quickly trigger the whistle 5 times by pressing the airbag horn cover for 1 second.



## Open the car door quickly.

After enabling this function, pull up the corresponding window button three times in a row ↑ to quickly open the corresponding door.

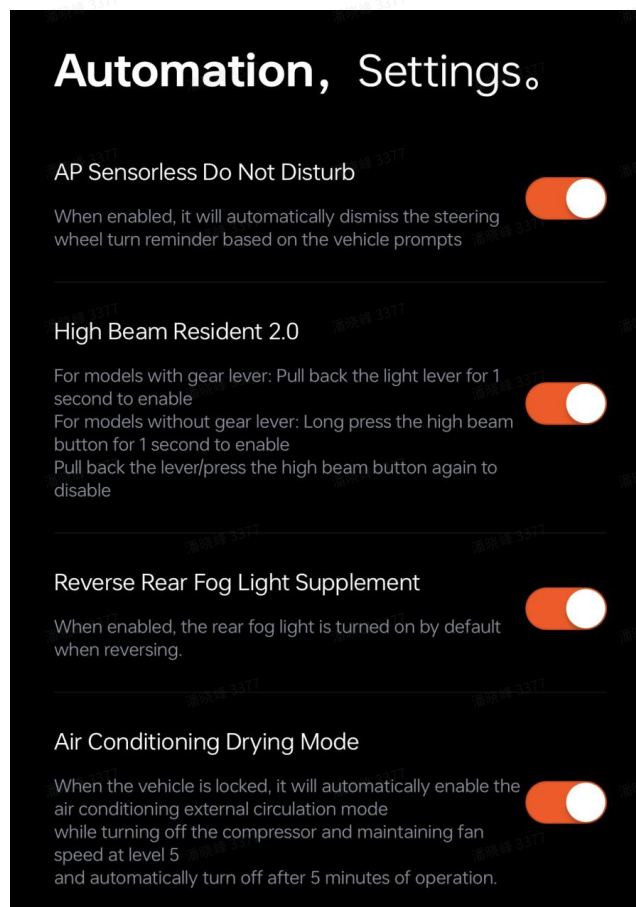




**Note** ⚠: This function can only be used when the speed is 0 and the P gear is parked .

**Note** ⚠ : Some models may not be able to fully pop out due to **hinge and door structure problems** , which is normal, please be aware. (You can try to use lubricating grease to lubricate the lock cylinder and hinge or add rubber sealing strips to the door frame to assist in opening the door.)

#### 4. Automated settings:





Fill the fog light after reversing.

After enabling this function, when the headlights of the vehicle are turned on, the R gear will automatically turn on the rear fog lights of the vehicle to provide supplementary light for the rear view of the vehicle.

**Note ⚠:** When the rear fog light is turned on, the vehicle headlight needs to be in working condition, and the rear fog light will not be turned on when the vehicle is not turned on.

**Note ⚠:** Do not turn on this function in good visibility to avoid affecting the line of sight of the driver of the rear vehicle. Please ensure your own and others' safety when using it.

Air conditioning drying mode:

**⚠ Note:** Due to the change of the 16V power supply mechanism in the new Model Y (2025), the XiaoteBox controller will immediately cut off power after leaving the car, so it cannot execute the air conditioning drying command. Therefore, the "air conditioning drying" function of this model is temporarily unavailable. Please be aware.



After enabling this function, the air conditioning drying program will start if the following conditions are met:

1. All passengers get off the bus
2. The vehicle is locked

Automatically shut down the compressor, open the external circulation, maintain the 5 speed, air conditioning work for 5 minutes.

**Note ⚠:** This function will not be automatically turned on when the vehicle is in hold mode, dog mode, or camping mode.

**Note ⚠:** After turning on this function, there may be some condensation in the car, which is normal! Please manually turn off this function if you mind.

**Note ⚠:** During the operation of this function, if a passenger gets on the car and opens the door, it will automatically stop running, and it will be opened again after the next door is closed and locked.

### High beam permanent 2.0:

After enabling this function, it supports forcibly turning on manual high beam/Self-Adaptation high beam in any state.

Model with gear lever: Pull the left light lever to turn on for 1 second

No gear lever model: Long press the high beam button for 1 second to turn on

Close method:

Vehicles with gear lever: Pull the left light lever again to turn it off

No gear lever model: Press the high beam button again once to turn it off



**⚠ Note:** If the vehicle has turned on the Self-Adaptation headlight function, turning on the high beam permanent function will force the Self-Adaptation high beam to be activated. If you need to turn on the manual high beam, please click Control > Lights > Self-Adaptation Headlights, and turn off the vehicle Self-Adaptation headlight function.

**Note ⚠ :** If the Self-Adaptation high beam is turned on and the gear lever is pulled back again/the high beam button is pressed and cannot be turned off, it may be caused by the current vehicle system sending instructions to activate the Self-Adaptation high beam function.

## AP No Disturbance:

After enabling this function, the control box will read the "turn the steering wheel" reminder and execute a volume up and down command to lift the "turn the steering wheel" reminder, thus achieving the AP Do Not Disturb function. (This function needs to be enabled by configuring it in the "Xiao Te" Mini Program)

**Note ⚠:** After enabling this function, the driver still needs to stay focused and hold the steering wheel. In some cases, Do Not Disturb may not work.

**WARNING ⚠:** It is recommended after turning on "AP Do Not Disturb" . **It is still necessary to keep your hands on the steering wheel at all times and pay attention to road conditions, surrounding vehicles, and other road users** (such as pedestrians and cyclists). Always pay attention to road conditions, **be prepared to take immediate action at all times** . Failure to follow these instructions may result in property damage, serious personal injury, or death, and the related risks need to be borne by the driver.

**Warning ⚠:** When using "AP Do Not Disturb", **It is the driver's responsibility to remain alert, drive safely, and take control of the vehicle at all times** . When driving, it is necessary to observe the road conditions and be prepared to take the correct measures as needed. The relevant risks need to be borne by the driver.

**Warning ⚠:** During use, the driver still needs to **drive the vehicle in accordance with laws and regulations** , and the driver is still the first responsible person of the vehicle. **All consequences need to be borne by the driver himself** .

## 5. Instrument upgrade instructions



## 1. XiaoteBox main control program update:

Click Update to automatically download and upgrade. The upgrade time is usually 3-5 minutes. During the upgrade process, the screen will disconnect from the Bluetooth connection of the main control box.

**Note** ⚠: During the upgrade process, it is necessary to ensure that the vehicle is in the parking state, otherwise the upgrade process may report an error and cause the upgrade to fail.

**Note** ⚠: If the upgrade fails or reports an error, try to restart the main control box Bluetooth by turning the steering wheel left and right for 3 seconds, wait for the dial and mobile APP to reconnect and then try again.

## 2. Xiao Te dial UI update:

Use the included USB flash drive (or prepare a USB flash drive with more than 1GB of memory, you can use the original Tesla USB flash drive). If the USB flash drive does not have a Type-C interface, you need to purchase a USB-A to Type-C adapter.

**Note** ⚠: The firmware upgrade USB flash drive needs to support USB 2.0 transfer rate, and the USB flash drive needs to be formatted as FAT-32 format.

Click to download and copy the update.bin file to the root directory of the USB drive, then use wireless charging to power the meter screen and keep it on. Insert the USB drive into the Type-C interface at the bottom of the meter screen, and it will restart in 1-2 seconds to enter the upgrade interface. Wait for the Progress Bar to complete and restart.

**Note** ⚠: If there is no response to the upgrade, please focus on checking whether the firmware file name is correct. Some models will automatically add prefixes and suffixes when exporting firmware. Please rename it yourself.

**Note** ⚠: Please ensure stable power supply and environmental temperature during the upgrade process, do not let the screen power off or shut down , otherwise it may cause irreversible chip data damage.

## 6. Other instructions:

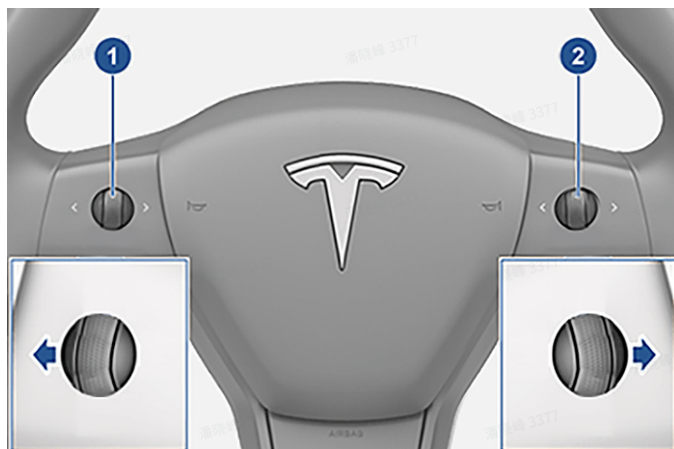
### 1. Restart the main control box:

If there is a problem that the screen cannot be connected to the main control box or other data transmission and reception abnormalities occur,

You can try to restart the CanBus main control box by simultaneously dialing the left and right scrollers for 3 seconds.

**Note** ⚠: After a successful restart, the left and right turn signals will flash once, and the dial will display a "not connected to the small box" prompt during the restart.

**Note** ⚠: This feature requires the XIAOTEBOS controller MCU firmware to be updated to version 20240614 or above



### 2. Switch battery life algorithm:

If the vehicle is upgraded to a 2024.20.9 or higher system version, the dial **appears to have inaccurate endurance, and the battery bar shows 0** when it can be solved by long pressing the right scroll wheel for 6 seconds to switch the endurance algorithm.

